

Welcome to the Castle Downs Branch

The Castle Downs Branch has been a cornerstone of its community since 1981. Originally located in the same complex, it moved to its current space in 2002 within Ward tastawiyiniwak (ᑕᐢᑕᐱᐅᐃᑦᑕᐱᐅᐃᑦ). In response to growing demand, the branch expanded by 2,700 square feet in 2005.

With a collection of over 57,800 items and hundreds of programs each year, Castle Downs continues to serve as a vital, welcoming hub for learning, gathering, and connection in Edmonton's northwest.

230,600
VISITS
IN 2024



300,000
ITEMS
BORROWED
PER YEAR

12,800
CLASS
VISITORS



Features and Spaces

Program Room

The medium-sized, well lit program room features an entrance for patrons with mobility needs.

Capacity: 60 people

Includes:

- TV with HDMI input and Clickshare capabilities
- 12 folding tables
- 40 chairs
- Kitchenette with sink

Book a Room!



To learn more or book the room, scan the QR code or call **(780) 496-1804**.

Services and Amenities

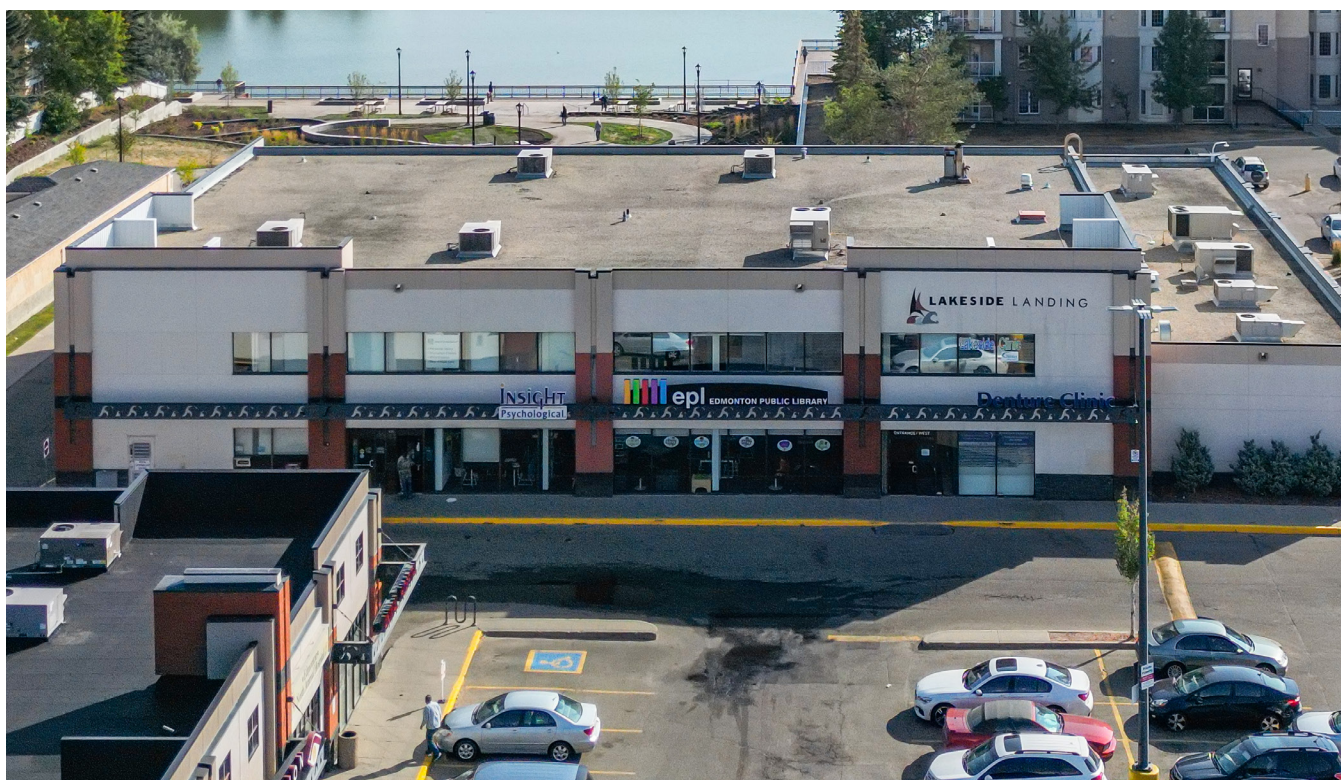
- Printing, scanning, and faxing
- 24 public computers
- Free Wi-Fi
- 24-hour item return chute
- Universal washrooms
- Bookable program room
- Community gallery space
- Early literacy iPads
- Home delivery services
- Settlement services
- Early literacy, digital literacy, and other programs for all ages



A Branch with a View

Nestled beside Beaumaris Lake—the oldest and largest stormwater lake in Edmonton—Castle Downs Branch offers a one-of-a-kind setting for library experiences. Floor-to-ceiling windows on the east side of the building frame views of the lake's diverse wildlife, from white pelicans and red-necked grebes to muskrats and painted turtles.

The surrounding neighbourhoods, named after European castles, add to the area's unique charm. In warmer months, customers can enjoy weekly lakeside storytimes and spot the beloved sandcastle perched atop the hold shelves—a playful nod to the branch's 1981 opening celebrations.



Ward: tastawiyiniwak
(ᑕᐱᑕᐱᐅᐅᐅᐅᐅᐅ)

Address:

106 Lakeside Landing,
15379 Castle Downs Road
Edmonton, AB T5X 3Y7

Phone: (780) 496-1804

Branch Hours:

Monday to Thursday: 10 a.m.–9 p.m.
Friday and Saturday: 10 a.m.–6 p.m.
Sunday: 10 a.m.–5 p.m.

For more information, scan the QR code.

