



How to connect to EPL Wireless (XP Version)

This walkthrough was created to help staff and customers with the process of connecting to the EPL-Wireless. It should be assumed that the customer has the basic understanding of how wireless works and also has Administrator rights to the computer in their possession.


Things to check before you start setting up the connection or troubleshooting.

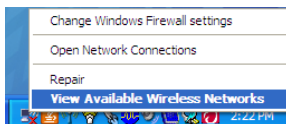
- 1) Does the client have Administrator rights to the computer?
- 2) Newer computers have an On/Off button that can disable Wireless access, is it turned On?
- 3) The device might have proprietary software that controls the wireless settings, choose proprietary.

There are multiple ways to connect to Wireless connections through the Windows XP interface.

The most common is to click on **Start / Connect To / Wireless Network Connection**.

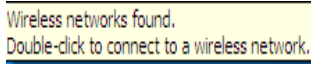


Right clicking on the Wireless connection icon  on the Taskbar near the system clock and click on **View Available Wireless Networks**.

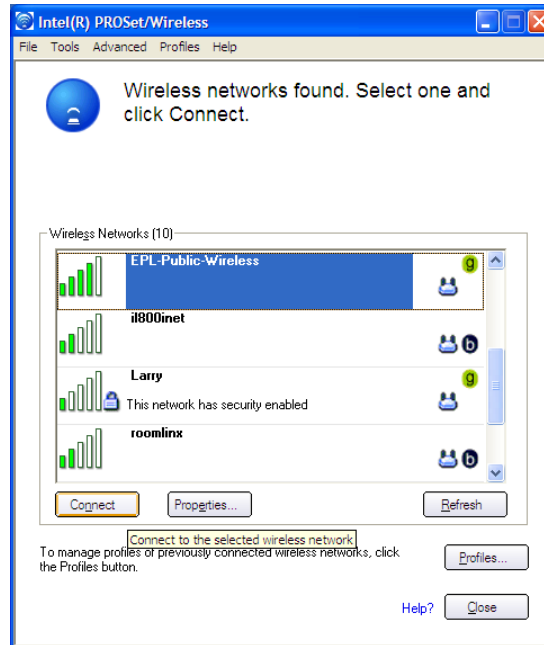


Also by using the applications provided by the system manufacturer.

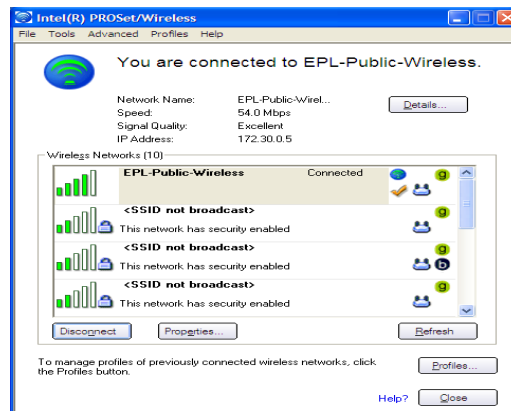


Sometimes a message will appear letting you know that Wireless networks are found. You can also open the connection by clicking on the message.  Double-click to connect to a wireless network.

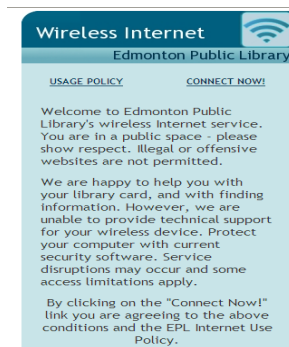
All of the unsecure connection routes will allow you to connect to the host of your choice. Click to highlight, then click **Connect**.



Notification window will now change to show that you have successfully connected to EPL-Public –Wireless.



Once you have established a connection you will need to open a browser (IE, FireFox, Mozilla, Safari, Opera, Netscape, AOL) and type in the follow url (<http://www.epl.ca>).



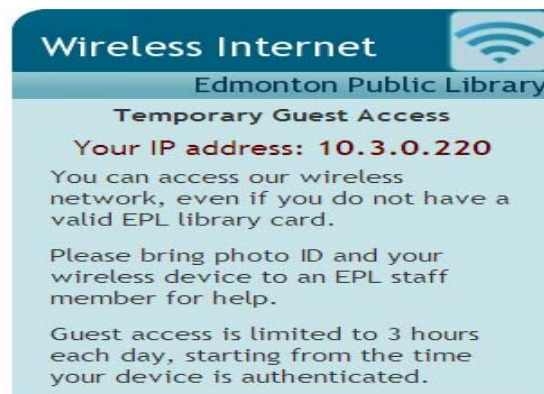
Click on **Connect Now** and the customer will have two options;

- 1) The customer has an Edmonton Public Library card in good standing and can input the library card number and PIN then click **Submit**.



The image shows a login interface for 'Wireless Internet' at the 'Edmonton Public Library'. It features a dark blue header with the title and a Wi-Fi icon. Below the header, there are two input fields: 'Library Card:' with the value '212210#####' and 'PIN:' with four dots. A red 'Submit' button is positioned below the PIN field. To the right of the button is a link labeled 'Just Visiting?'.

- 2) By clicking on **Just Visiting** and supplying the Staff Member with the IP Address listed off the site and valid Picture ID with address, they will allow the user to authenticate on to the EPL Wireless Network for a limited time period.



The image shows a page titled 'Temporary Guest Access' under the 'Wireless Internet' header. It provides the user's IP address as '10.3.0.220' and explains that they can access the wireless network without a library card. It also includes instructions to bring a photo ID to a staff member and notes that guest access is limited to 3 hours per day.