

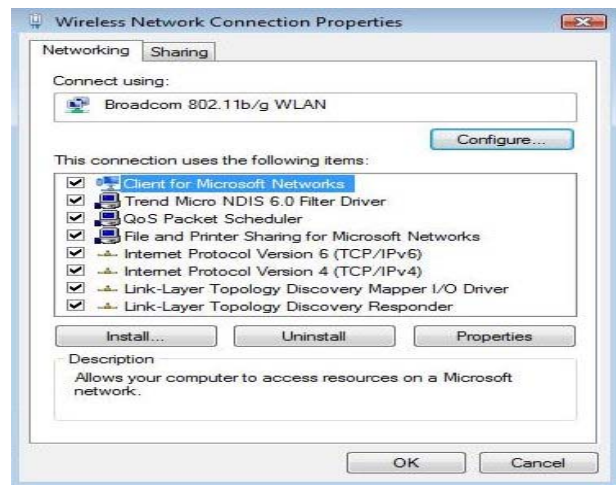
EPL Wireless – for Vista users



Typical Network settings details.

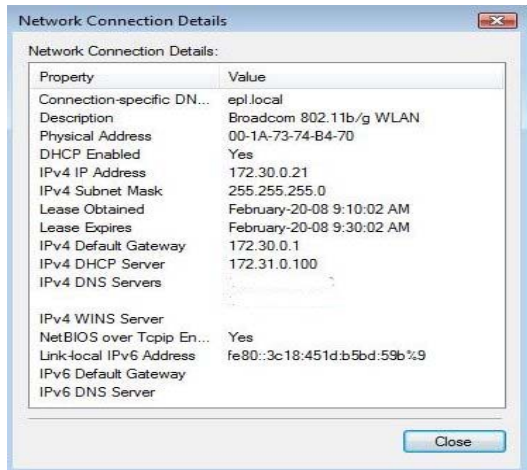


Click on **View Status**.



Click on **Properties** and **uncheck Internet Protocol Version 6 (TCP/IPv6)**, Click **OK**. Try to open <http://www.ep.ca/> and connect like normal.

Standard connection settings when connected to the EPL Wireless.



***Note: A restart of the computer might be required after changing network settings.**